

PK-12 Advancing Literacy



PORTLAND
Public Schools

March 5, 2025

Presentation Overview

Guiding Questions:

- Why is PPS centering LITERACY as a core priority?
- How is PPS centering LITERACY PK-12?
- What are the investments, programs, and roles that support LITERACY in our system?

Presenter:

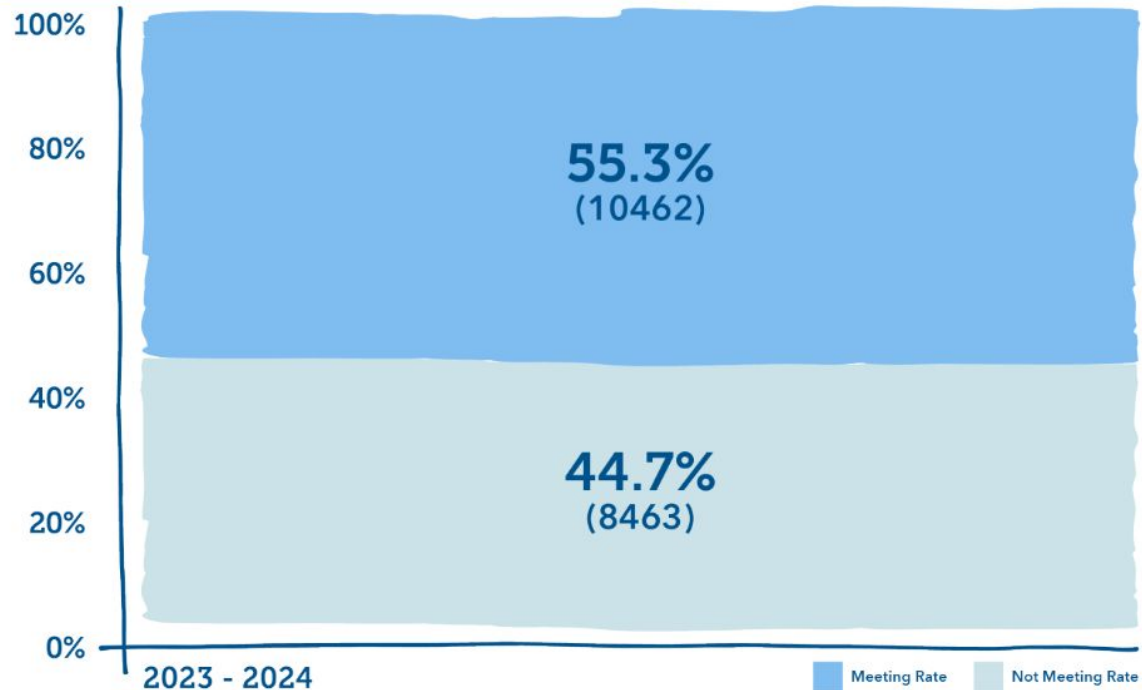
Dr. Emily Glasgow, Senior Director PK-5
Academics, eglasgow@pps.net

(on behalf of the Office of Teaching & Learning)



Current State, ELA OSAS

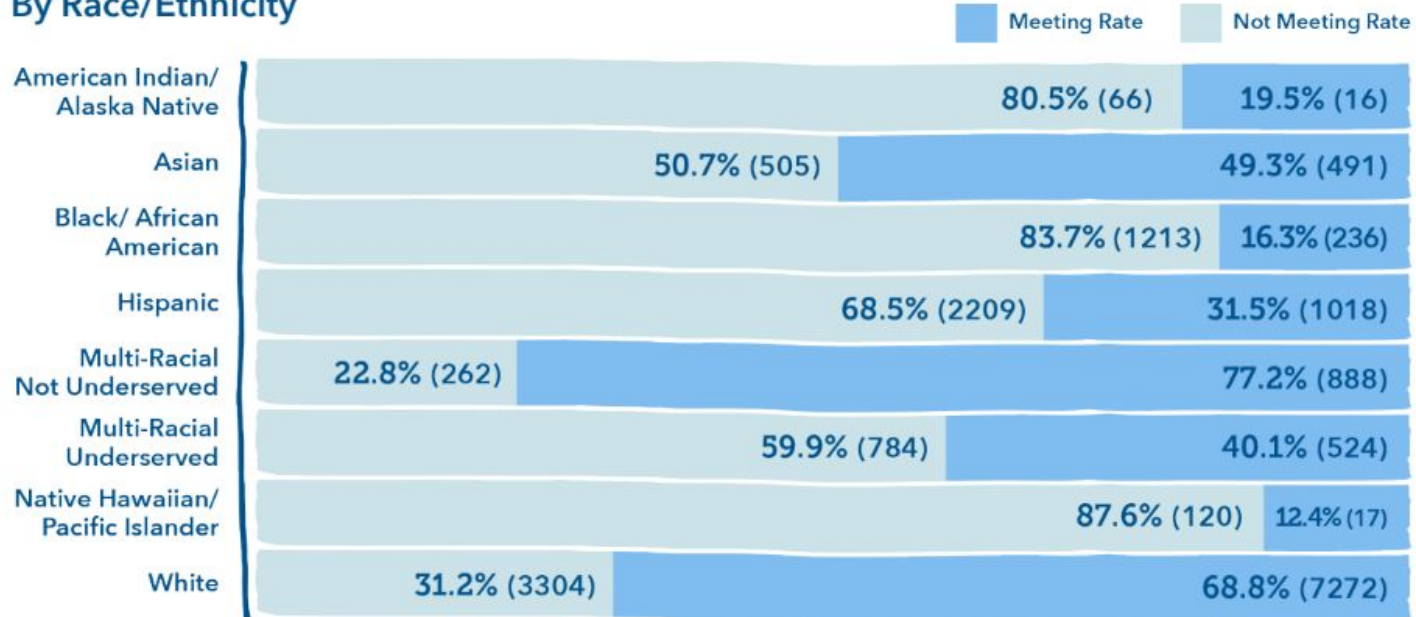
All OSAS ELA Passing Rate 2023 - 2024

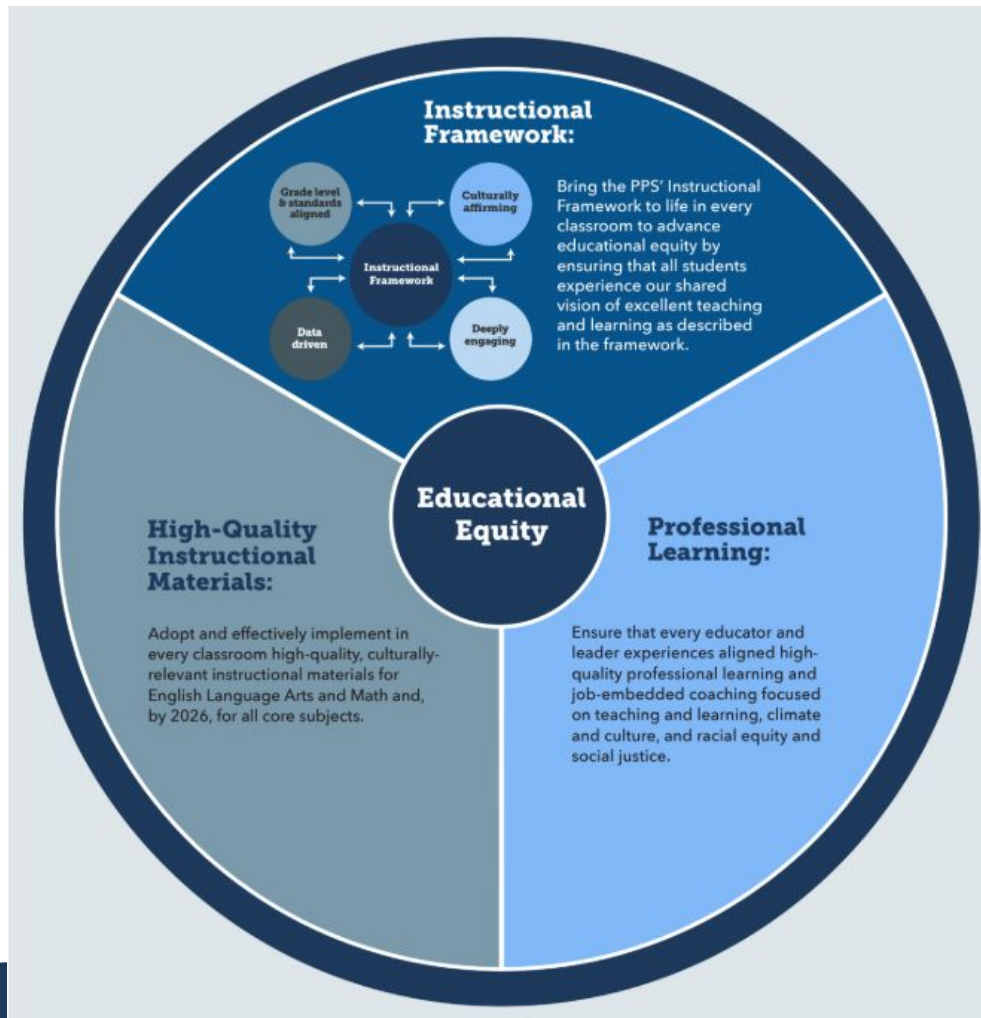


Current State, ELA OSAS (by race)

All OSAS ELA Passing Rate 2023 - 2024

By Race/Ethnicity





PK-12 Core Curriculum

Resource Investments

	Focus	Grades
Tools of the Mind	Integrated Language & Learning	PK
Heggerty	Phonemic Awareness	PK-2
Fundations	Phonics/Spelling	K-3
GEODES	Transfer to Text	K-2
Wit & Wisdom	Comprehension & Writing	K-5
Benchmark	Spanish Language Arts	K-5
HMH Into Literature	Comprehension & Writing	6-12

PK-12 Learning & Coaching

Staffing & Capacity-Building Investments

Professional Learning:

- Teacher Summer Institutes
- School Year Professional Development Days
- Professional Learning Communities
- Early Release Professional Learning (e.g. Science of Reading Cohort)

Coaching:

- School Based Instructional Coaches in K-8 schools
- Early Literacy Coaches (Science of Reading Cohort)

PK-12 Interventions & HIT

Student-Facing Interventions

Interventions:

- Reading intervention teachers assigned to specific schools (based on data, centrally-supported)
- 1st-5th grade WIN blocks daily

Tutoring:

- High Impact Tutoring @ 50 schools, supporting over 1,500 K-3rd grade students (in SY 24-25)

Early Literacy Success Initiative

State Guidance & Investments

State Frameworks:

- [Oregon's Early Literacy Framework](#)
- [Oregon's Adolescent Literacy Framework](#) (hot off the press!)

State Investments:

- Early Literacy Success School District Grant
- Approx \$6.7 million/biennium
- In first biennium, funded:
 - Teacher professional learning
 - Literacy Coaches
 - Literacy Interventionists
 - Summer Acceleration
 - High Impact Tutoring
 - PK curriculum

Superintendent's 100-Day Plan



Develop a long term, multi-year literacy plan, including launching a city-wide literacy campaign – working with an equity lens at every step.



Empower families with the materials and resources they need – in a culturally responsive and equitable way – to support literacy at home.



Develop a portfolio of extended learning offerings based on student needs, including programming for middle school students, to be offered before and after school, as well as during school breaks, leveraging district and community resources.

